



EPALE

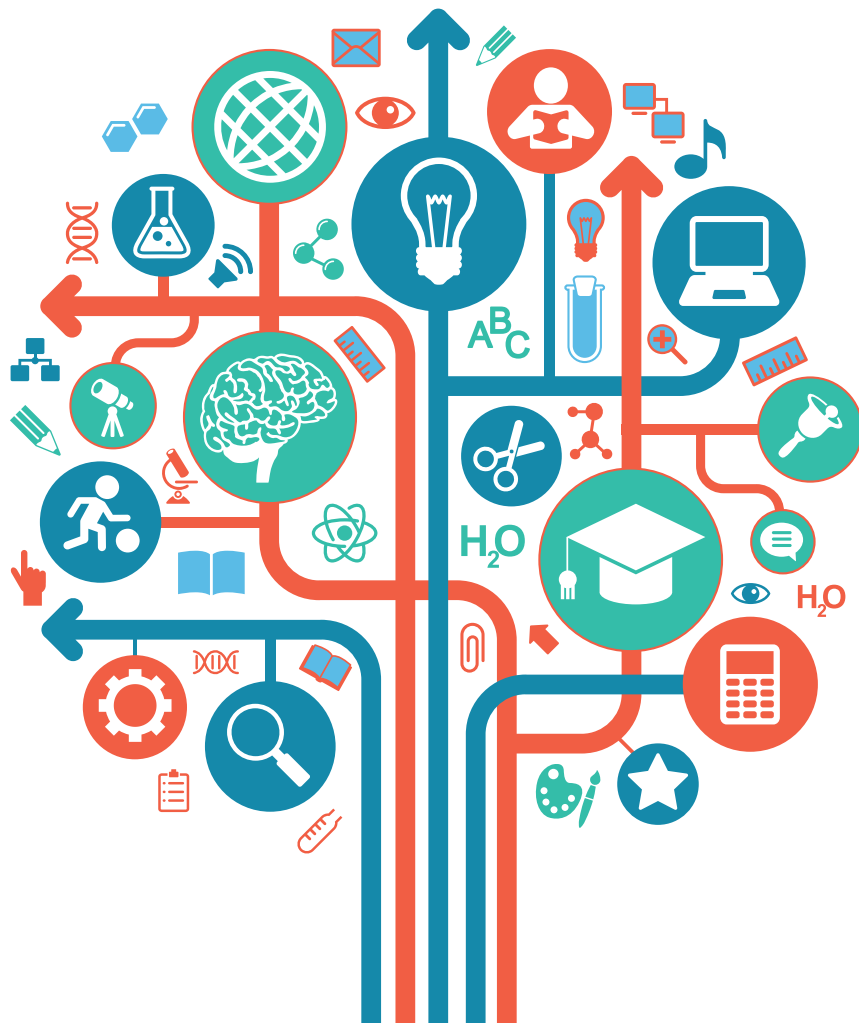
A short guide into the opportunities available on EPALE



With the support of the
Erasmus+ Programme of
the European Union

CONTENTS

- 03 What is EPAL?
- 04 What's in it for you?
- 06 Adult learning projects
- 07 EPAL community



What is EPALE?

The ePlatform for Adult Learning in Europe (EPALE) is the go-to site for anyone with a professional role in adult education. Funded by the European Commission, EPALE aims to improve the standards of adult education across Europe through mutual learning between adult learning professionals.

Learn

Search

Exchange

Our aim is to build a multilingual online community around a wide range of high quality educational resources, news, events and networking tools.

EPALE was designed with adult learning professionals in mind, to help you learn from each other and develop your professional practice. The site offers lots of really useful tools, including:

- a calendar of events
- a glossary of terms
- the latest news on adult learning
- a library of resources
- virtual meeting space

You can exchange teaching materials and good practice, as well as ideas and resources, with others throughout Europe. In addition, the site offers a partner search facility to assist you in finding partners to network, exchange good practice and develop joint projects with.

4 What's in it for you?

EPALE can support your adult learning ventures in a number of ways:

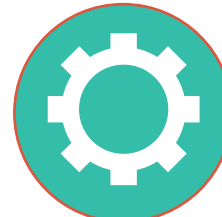
Knowledge sharing

EPALE is a space for like-minded users to come together to discuss the issues and topics that matter to them. These areas also give spaces for discussions, with forums, commenting, rating, the ability to follow other users, and polling.

The latest adult education news

To find all the latest news about adult learning across Europe, EPALE is the place to go.

The newsroom will bring the latest updates in adult education best practice, policy updates and funding opportunities for professionals working in adult education.



Professional development

The EPALE calendar of events will help you find out about conferences and training opportunities.

It offers you the chance to publicise your project conferences, courses and seminars, and build your project's profile across the EU. You might also consider attending other organisations' events as an opportunity to disseminate the outcomes of your project.

High-quality resources

You can use the EPALE resource centre to find out about good practice, andragogical material, current research data, etc., which may be of interest to support the delivery of your project or your policy development and discussions.

The various interactive features will allow you to seek and identify good practice from professionals in Europe, and run opinion polls.

Partnership opportunities

The site now offers a partner search facility, should you wish to enhance your current partnership.



Adult learning projects

How does this link to my Erasmus+ project?

In Erasmus+ one of the key priorities is modernising and improving adult education through cooperation with other sectors.

If your project is funded through the Lifelong Learning Programme or the Erasmus+ programme, your project results should be uploaded to the Erasmus+ Dissemination Platform, and EPALE can link to them there.

All other adult learning projects can submit resources for direct publication in the EPALE library, or for a link to their website.



For more information, contact epaleuk@uk.ecorys.com, 0121 212 8930



@EPALE_UK



Adult Learning in the UK



European
Commission

EPALE Communities of Practice



Erasmus+

Communities of Practice

EPALE's Communities of Practice are online groups where people with similar interests from the adult learning sector can get together. Join a community to meet like-minded EPALE members from across Europe and exchange ideas, resources and good practices.



All our communities are listed on EPALE
– under **Community activities**.

ec.europa.eu/epale
helpdesk@epale-support.eu